

HEADER- SEE PLAN

R 5/8" X 5 1/2" X 0'-5 1/2"
TOP PLATE

TYP 1/4

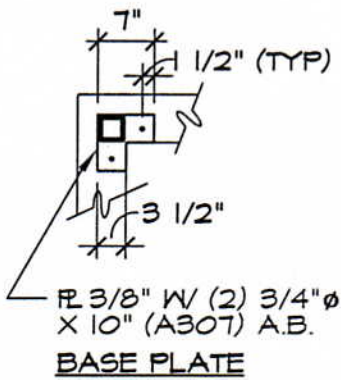
R 3/8" X 3 X 0'-6"
W/ (2) 3/4" φ (A307) BOLTS

1/4

TS 3 X 3 X 1/4"

3" RECESS IN SLAB
FOR BASE PLATE (7" X 7")
FOUNDATION- SEE PLAN

R 3/8" W/ (2) 3/4" φ
X 10" (A307) A.B.



A

ELEVATION OF CORNER COLUMN 1/2"=1'-0"



6/30/05